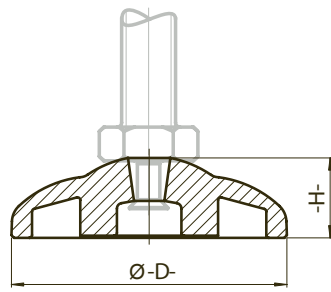


### Base for ECO Feet

Description	Die-cast Zinc Economical leveling foot for stable positioning on slightly uneven floors
Material	Die-cast zinc
Surface	Blue zinc plated / black powder coated
Specials	Other surfaces, other colors, screwed or glued anti-slip plate on request

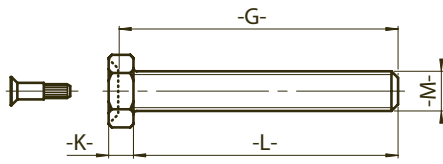


Surface	Base	D [mm]	H [mm]	Max. Load [kg]	Weight [g]	without Anti-slip Plate	with Anti-slip Plate
schwarz black	30	29	11.5	1600	20.0	098E030ZS	098E030ZSG
	40	39	12.0	1800	38.0	098E040ZS	098E040ZSG
	50	50	14.5	2000	60.0	098E050ZS	098E050ZSG
verzinkt zinc plated	30	29	11.5	1600	20.0	098E030ZV	098E030ZVG
	40	39	12.0	1800	38.0	098E040ZV	098E040ZVG
	50	50	14.5	2000	60.0	098E050ZV	098E050ZVG

compatible threaded rod see page 54 (ECO feet are provided factory assembled)

### Threaded Rod For Eco Feet

Description	Steel / Stainless Steel Threaded Rod for ECO feet
Material	Zinc plated steel / stainless steel SS 304
Screw joint	Swiveling range ±5°



Threaded Rod M x L	D [mm]	H [mm]	Max. Load [kg]	Weight [g]	Spanner Width	Zinc Plated Steel	Stainless Steel
M8 x 25	5.3	29.5	350	12.0	13	098EM08025M	098EM08025E
M8 x 40	5.3	44.5	350	17.0	13	098EM08040M	098EM08040E
M8 x 50	5.3	54.5	350	20.0	13	098EM08050M	098EM08050E
M8 x 70	5.3	74.5	350	26.0	13	098EM08070M	098EM08070E
M8 x 80	5.3	84.5	350	29.0	13	098EM08080M	098EM08080E
M8 x 100	5.3	104.5	350	35.0	13	098EM08100M	098EM08100E
M8 x 120	5.3	124.5	350	41.0	13	098EM08120M	098EM08120E
M10 x 25	6.4	30.0	470	22.0	17	098EM10025M	098EM10025E
M10 x 40	6.4	45.0	470	30.0	17	098EM10040M	098EM10040E
M10 x 50	6.4	55.0	470	35.0	17	098EM10050M	098EM10050E
M10 x 70	6.4	75.0	470	44.0	17	098EM10070M	098EM10070E
M10 x 80	6.4	85.0	470	49.0	17	098EM10080M	098EM10080E
M10 x 100	6.4	105.0	470	58.0	17	098EM10100M	098EM10100E
M10 x 120	6.4	125.0	470	69.0	17	098EM10120M	098EM10120E
M12 x 25	7.5	31.0	770	34.0	19	098EM12025M	098EM12025E
M12 x 40	7.5	46.0	770	44.0	19	098EM12040M	098EM12040E
M12 x 50	7.5	56.0	770	51.0	19	098EM12050M	098EM12050E
M12 x 70	7.5	76.0	770	65.0	19	098EM12070M	098EM12070E
M12 x 80	7.5	86.0	770	72.0	19	098EM12080M	098EM12080E
M12 x 100	7.5	106.0	770	86.0	19	098EM12100M	098EM12100E
M12 x 120	7.5	126.0	770	100.0	19	098EM12120M	098EM12120E
M16 x 40	10.0	48.5	1450	87.0	24	098EM16040M	098EM16040E
M16 x 50	10.0	58.5	1450	99.0	24	098EM16050M	098EM16050E
M16 x 70	10.0	78.5	1450	123.0	24	098EM16070M	098EM16070E
M16 x 100	10.0	108.5	1450	165.0	24	098EM16100M	098EM16100E
M16 x 150	10.0	158.5	1450	231.0	24	098EM16150M	098EM16150E