

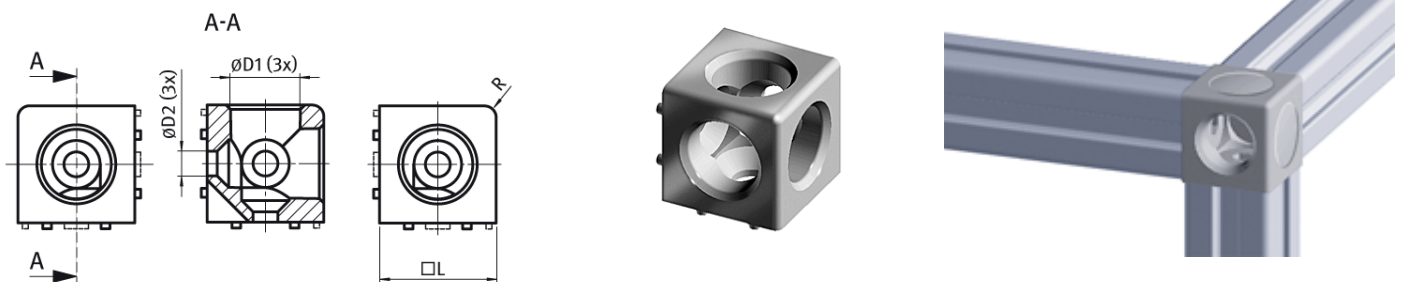
45x45 3 Way Cubic Connector

Description:

- To connect up to three profiles at right angles
- Suitable for 10mm slot profile

Material:

- Die Cast Aluminium



Version	Size	L(mm)	D1(mm)	D2(mm)	R(mm)	Weight (g)	Part No
Cubic Connector 3 way	45x45	45	24.0	13.0	3.0	151.5	KJN 524 480

