

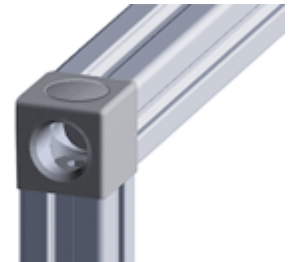
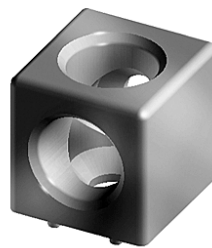
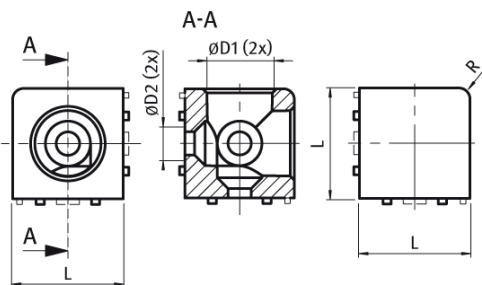
45x45 2 Way Cubic Connector

Description:

- To connect two profiles at right angles
- Suitable for 10mm slot profile

Material:

- Die Cast Aluminium



Version	Size	L(mm)	D1(mm)	D2(mm)	R(mm)	Weight (g)	Part No
Cubic Connector 2 way	45x45	45	24.0	13.0	3.0	170.0	KJN 524 486

